

## 29:128 Electronics – Grading

### *course grade*

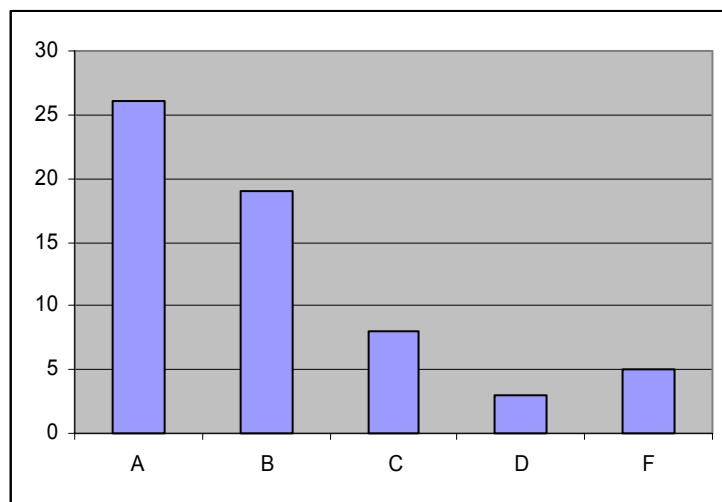
<b>Total Score</b>	Midterm Exam	10 %	
	Final Exam	30 %	
	Homework	10 %	
	Lab	25 %	(for details, see lab grading policy, next page)
	Lab Special Project	25 %	(for details, see lab grading policy, next page)

### fixed scale

A+	96-100%
A	89-95
A-	84-88
B+	80-83
B	72-79
B-	68-71
C+	64-67
C	60-63
C-	55-59
D+	49-54
D	40-48
F	<40

Your letter grade will be determined by your total score in the course and the “fixed scale” shown on the left.

Over 5 years of my teaching this course, this fixed scale has resulted in a distribution of letter grades shown below. Your grade will be determined by the fixed scale on the left, not by the distribution below.



## *lab grading*

points   item

5	show up in lab
5	turn in a report containing all required sections
5	write in complete sentences
15	schematics, showing all instruments and labels for pins on IC's
10	explanation of procedures used
60	results, including the following: <ul style="list-style-type: none"><li>• error values on analog measurements<ul style="list-style-type: none"><li>with an explanation of where these errors came from</li><li>propagation of errors for computed quantities</li></ul></li><li>• units (Hz, mV, etc.) on all data values including graphs &amp; tables</li><li>• sketch of oscilloscope display, if used, including labels for V &amp; t scales</li><li>• graphs, if used, that include smooth theoretical curves, measured values with error bars, axis labels and title</li></ul>

### Penalty for late lab reports:

- You must hand in your work in your lab session on the week indicated in the schedule.
- A penalty of 5 points per day will be applied to all lab reports that are handed in late.

---

### *Special Project Grading:*

At the end of the course, you will do a special project, which will be a circuit of your own design. You may construct it either on a prototype board or hardwired. Your project will be graded as follows:

<u>grading factor</u>	<u>prototype</u>	<u>hardwired</u>
design	80 %	60 %
cleverness of idea		
how well it works		
how ambitious it is		
schematic diagram	10	10
specifications	10	10
quality of construction	-	15
safety	-	5