

1. Course grade

Weighting:	Midterm Exam	8 %	
	Lecture Attendance & quizzes	5%	
	Final Exam	17 %	
	Homework	10 %	
	Lab Reports	35 %	(for details, see lab grading policy, next page)
	Lab Project	25 %	(for details, see lab grading policy, next page)

A rough guide to interpret your exam scores

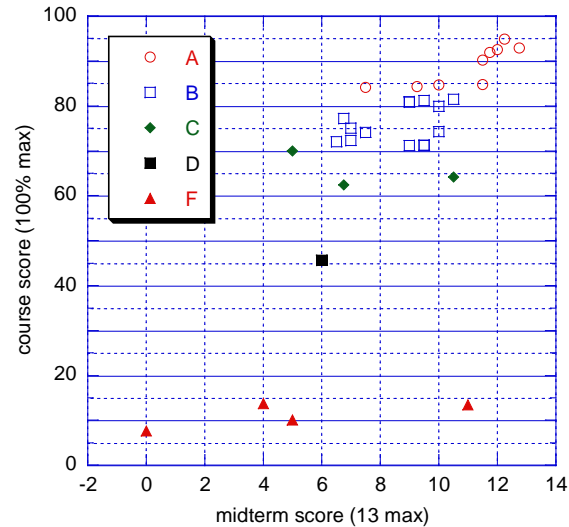
Midterm: average score is typically 75%

Final: average score is typically 55 to 60% (it's harder than the midterm)

Fixed scale for course grade

A+	96-100%
A	90-95
A-	84-89
B+	79-85
B	73-78
B-	69-74
C+	63-68
C	60-64
C-	55-59
D+	49-54
D	40-48
F	<40

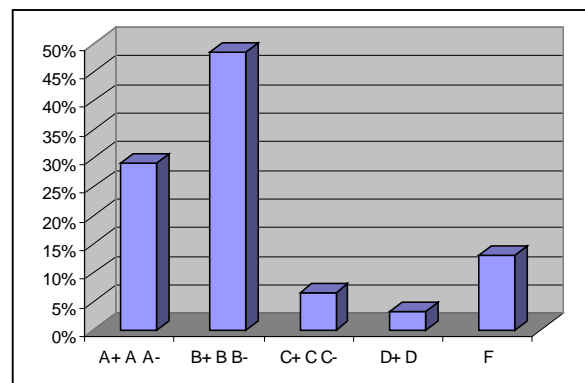
Midterm as a predictor of course score



Your letter grade will be determined by your total score in the course and the “fixed scale” shown on the left.

A histogram of course grades from a previous year is shown in the chart on the right. This is not a grading curve; it is intended only as an illustration. The distribution will vary each year because your grade will be assigned using the fixed scale above.

Students receiving grades of C or lower usually have poor attendance at lecture or lab, missing homework, and late or missing lab reports.



## 2. Lab reports grade

points    item

5	attendance: points received for showing up <i>on time</i> at the beginning of lab period
5	turn in a report containing all required sections
5	write in complete sentences
15	schematics, showing all instruments and labels for pins on IC's
10	explanation of procedures used
60	results, including the following: <ul style="list-style-type: none"><li>• units (Hz, mV, etc.) on all data values including graphs &amp; tables</li><li>• sketch or printout of scope display, if used, including labels for V &amp; t scales</li><li>• graphs, if used, that include: smooth theoretical curves, measured values with error bars, axis labels and title</li><li>• error values on analog measurements (where specified) with an explanation of where these errors came from propagation of errors for computed quantities</li></ul>

### Penalty for late lab reports:

- Hand in your work in your lab session on the week indicated in the schedule.
- **A penalty of 5 points per day is applied to all lab reports that are handed in late.**

Lab grades are given a weight so that longer labs count more and shorter labs count less.

---

## 3. Project Grade

At the end of the course, you will do a project, which will be a circuit of your own design. You may construct it either on a prototype board (recommended) or hardwired. Your project will be graded as follows:

<u>grading factor</u>	<u>prototype</u>	<u>hardwired</u>
design	80 %	60 %
cleverness of idea*		
how well it works		
how ambitious it is*		
schematic diagram	10	10
specifications	10	10
quality of construction	-	15
safety	-	5

\* Discuss your plans with Prof. Goree to get an idea of whether your idea is too ambitious or to unambitious. Also see example projects on the course website.